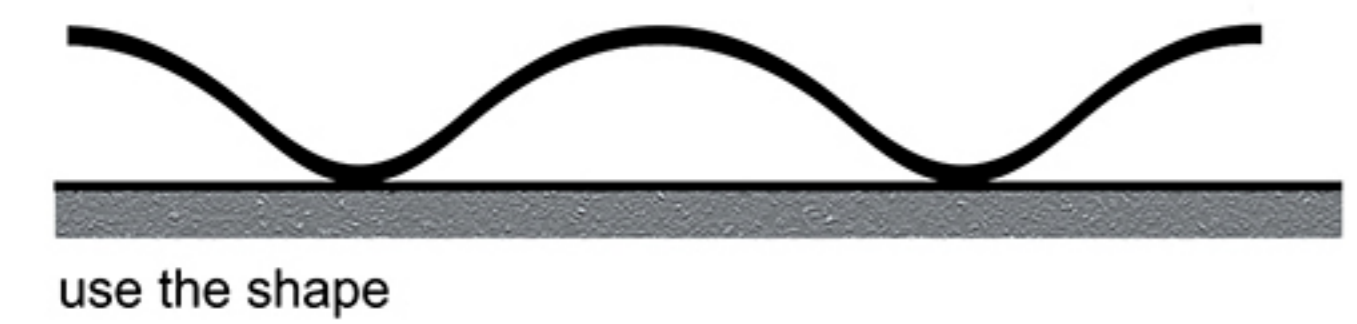
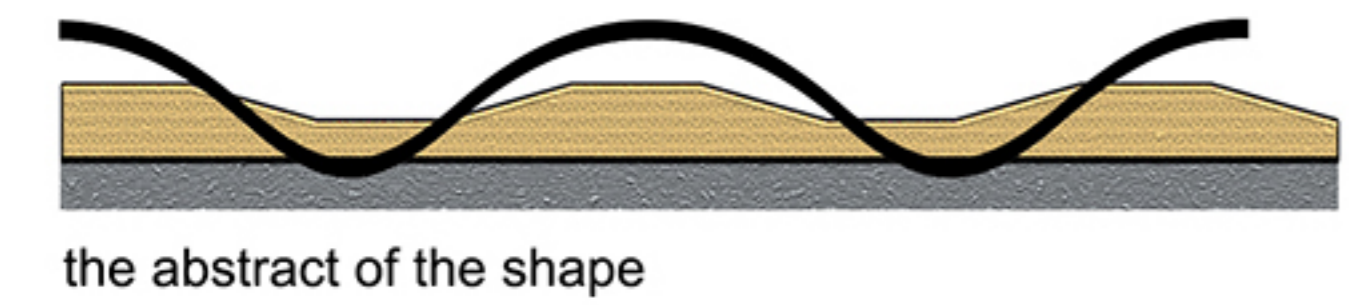
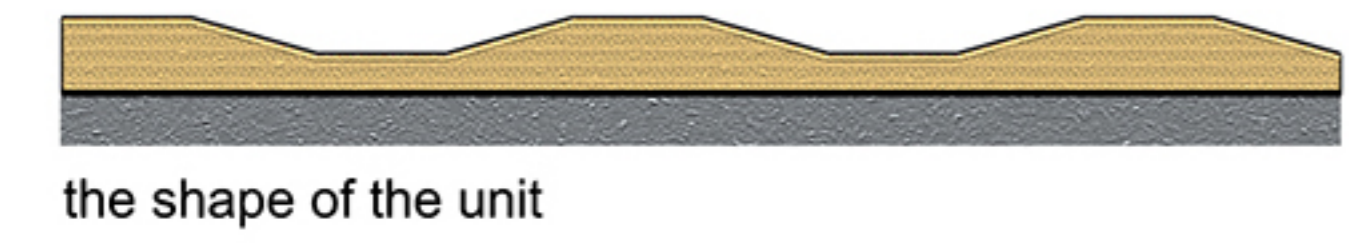
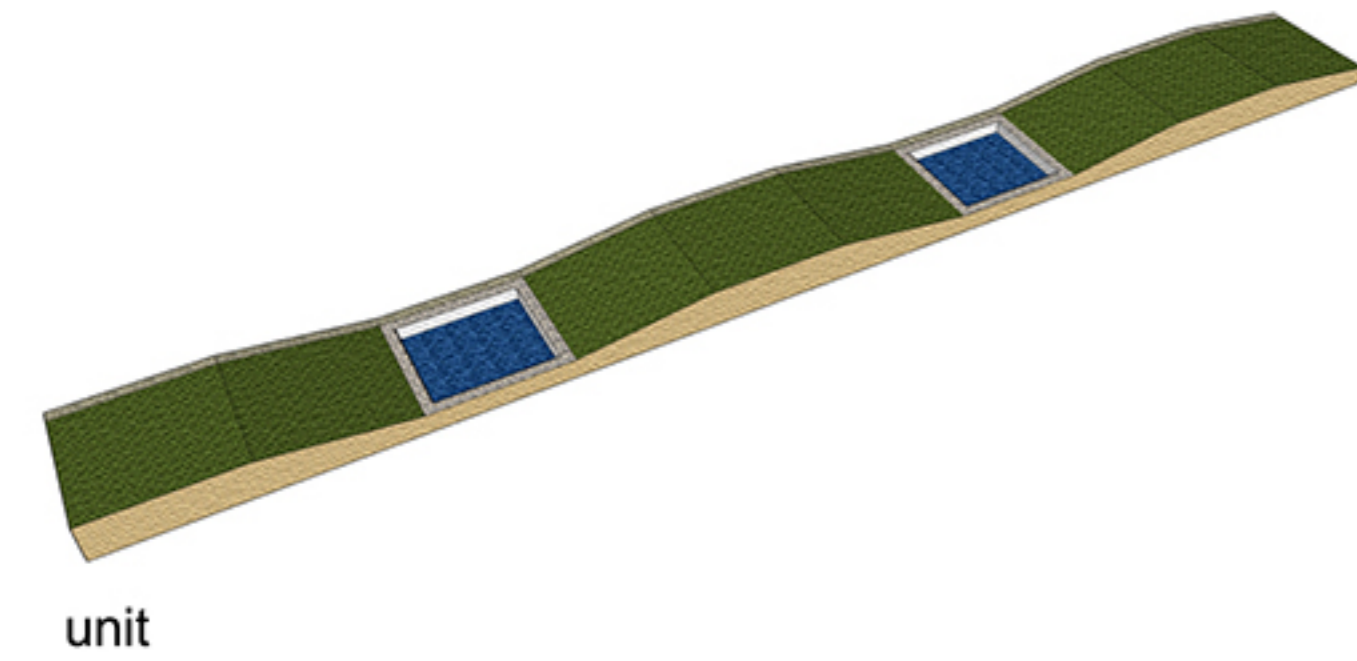




Green Square House Design

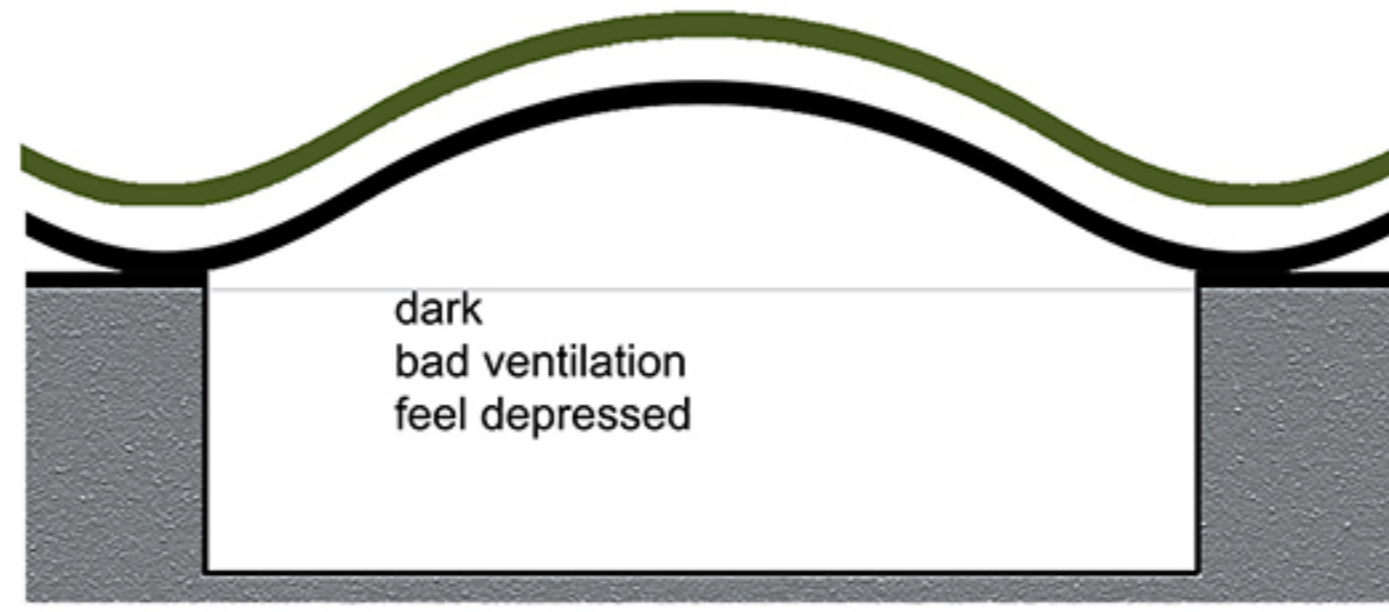


In the design of the elevation and the shape of the house, we use the abstract shape of the whole site and ground as the shape and layout of our house.

In this way, we can integrate the house and the whole ground as much as possible.

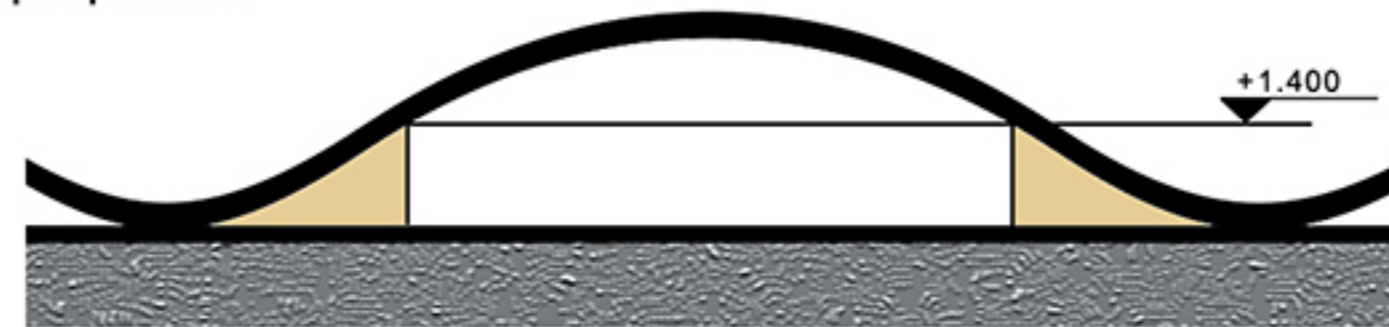
And this is one way that we integrate them together.

proposal 1

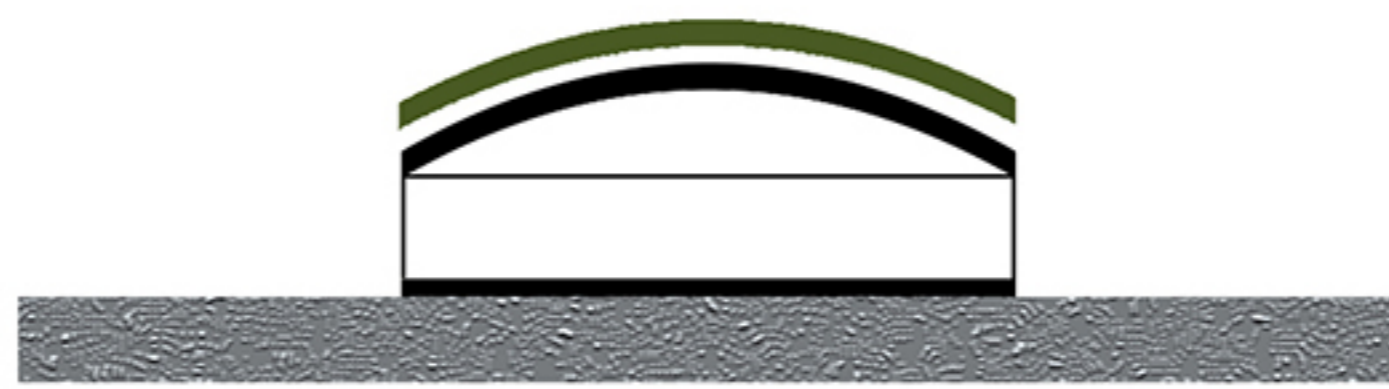


make the living space under the ground

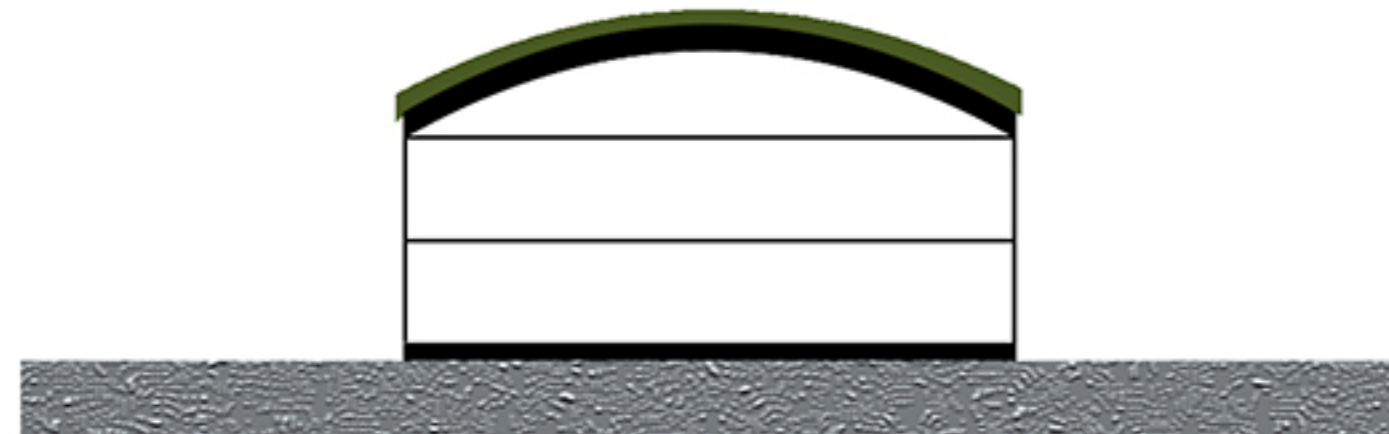
proposal 2



some space is too low to use

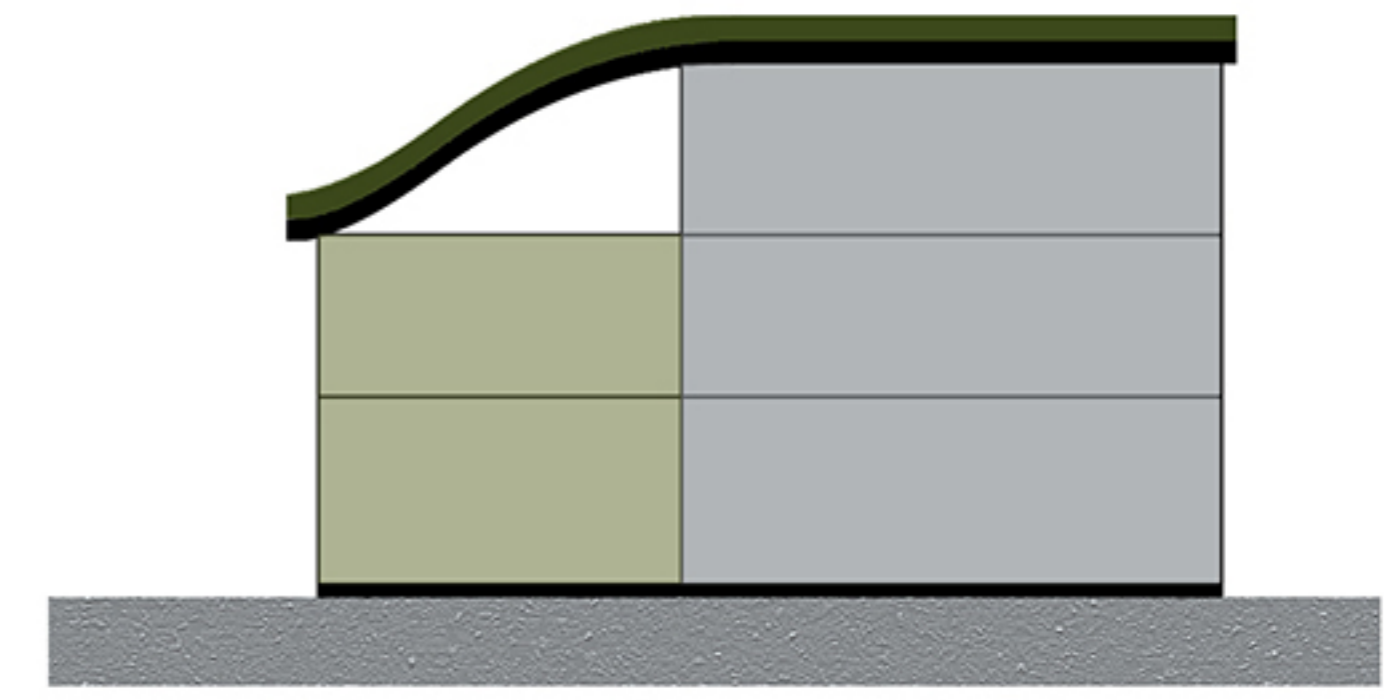


use the roof to plant the vegetation

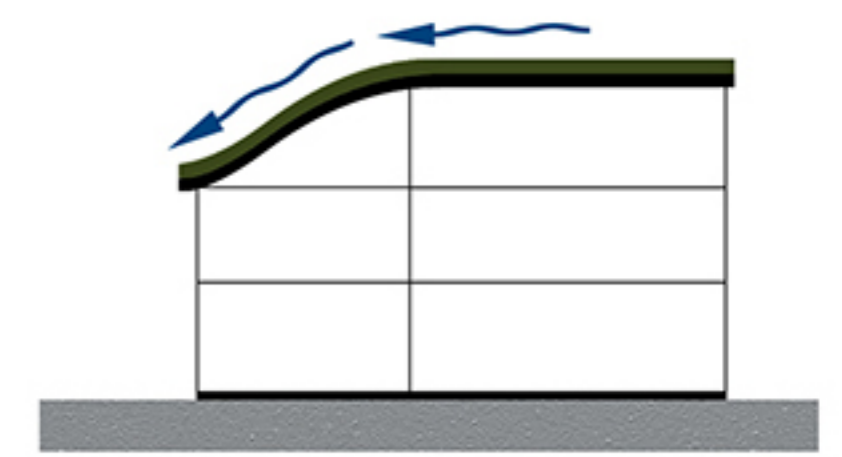
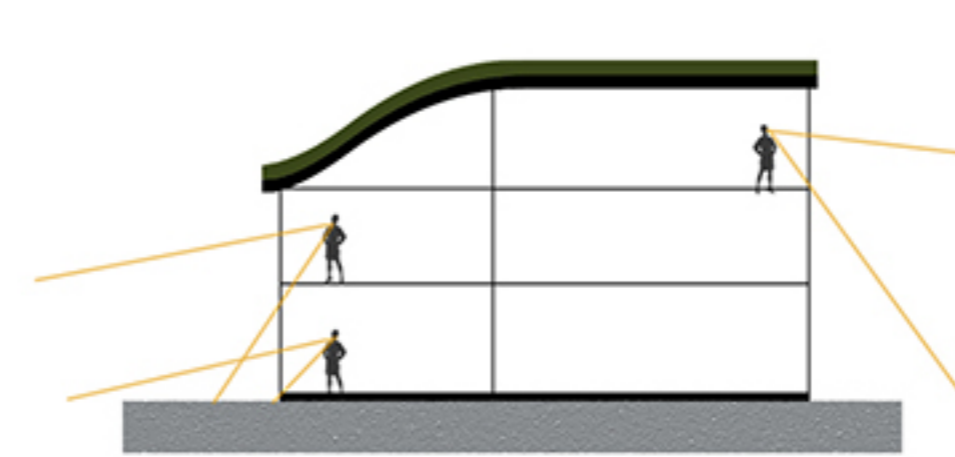
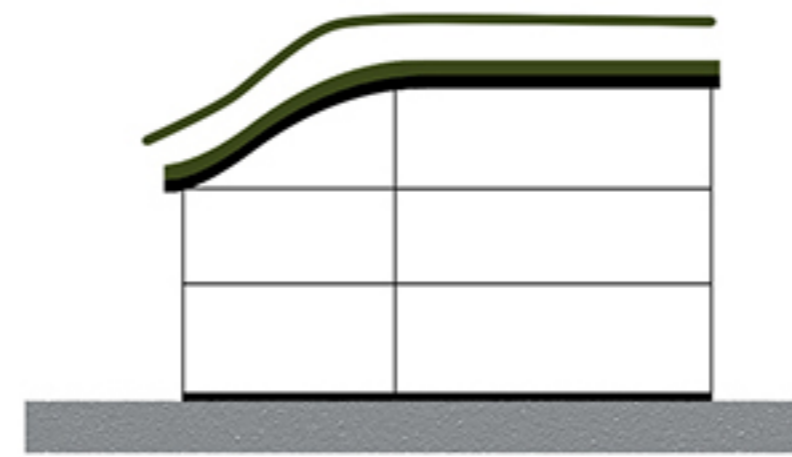
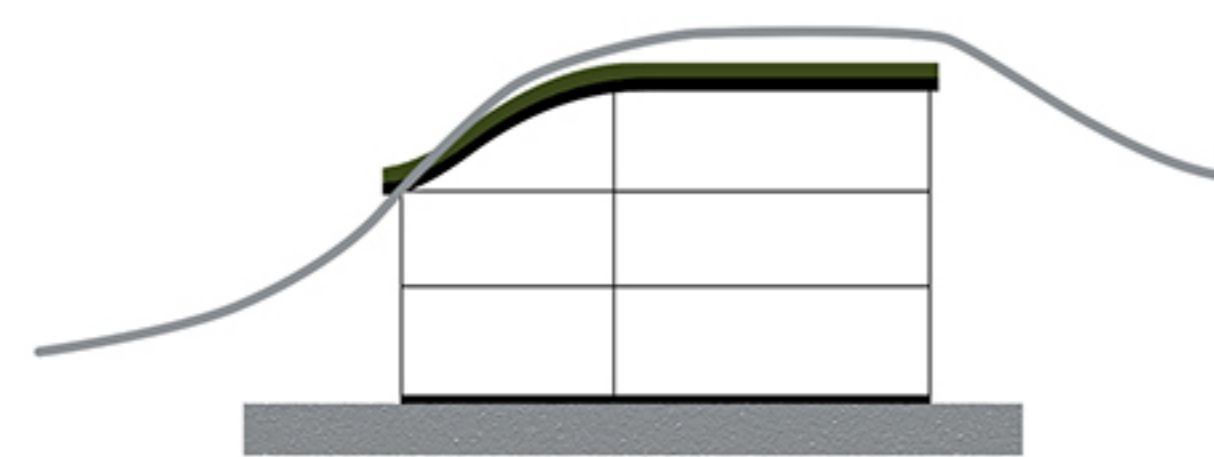


add floor to make more space

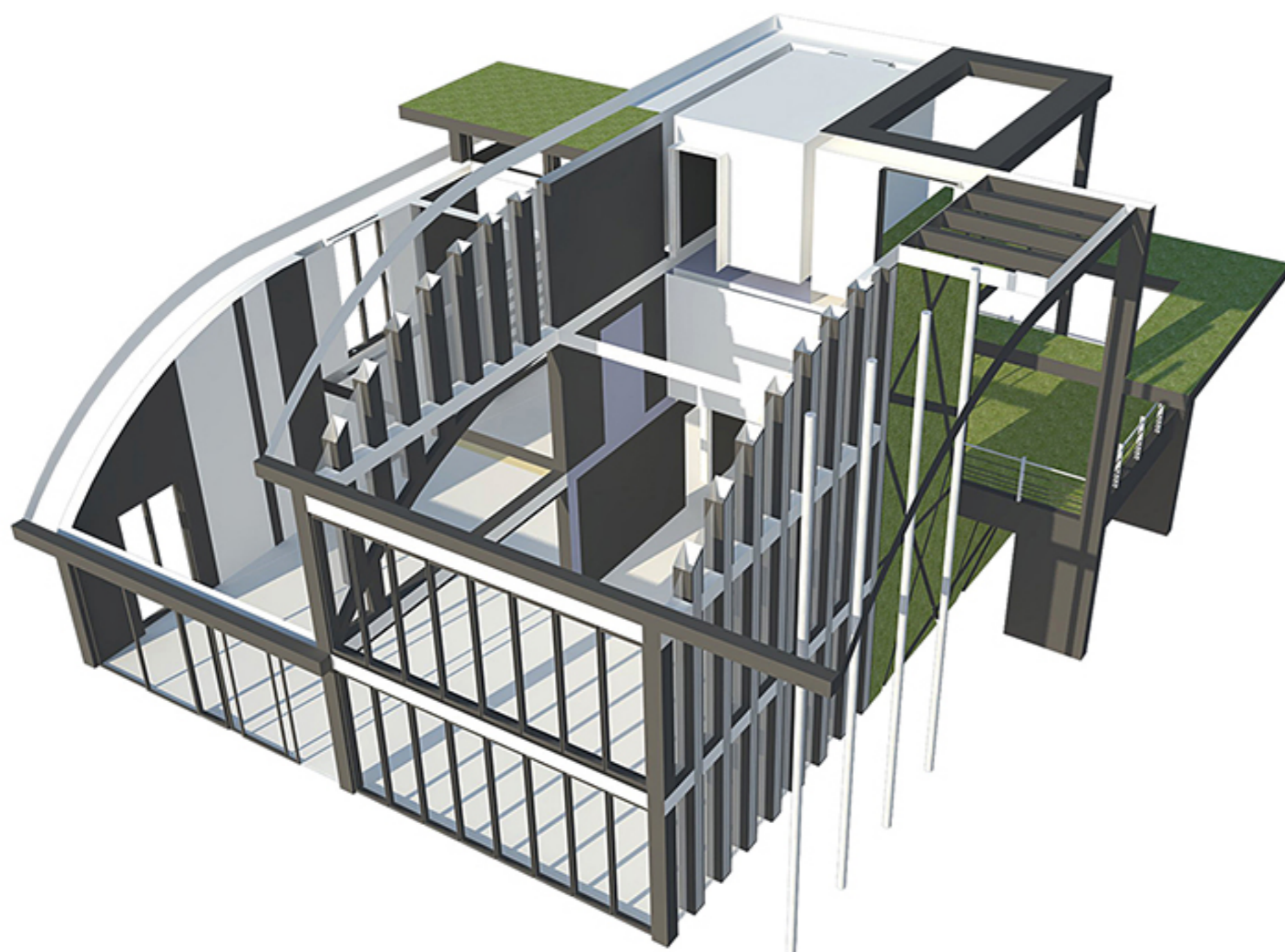
There are two proposals to make the inner space. The proposal 1 is making the interiors under the ground but it is too dark and has bad ventilation, what's more, people can not enjoy the beautiful scenery outside. The proposal 2 is cutting the space we can not use away but still keep the part of the continuous line of the shape. It makes more space by adding the floor on the ground. People may feel more comfortable on account of the good horizon.



in the east elevation, the shape consists of two squares

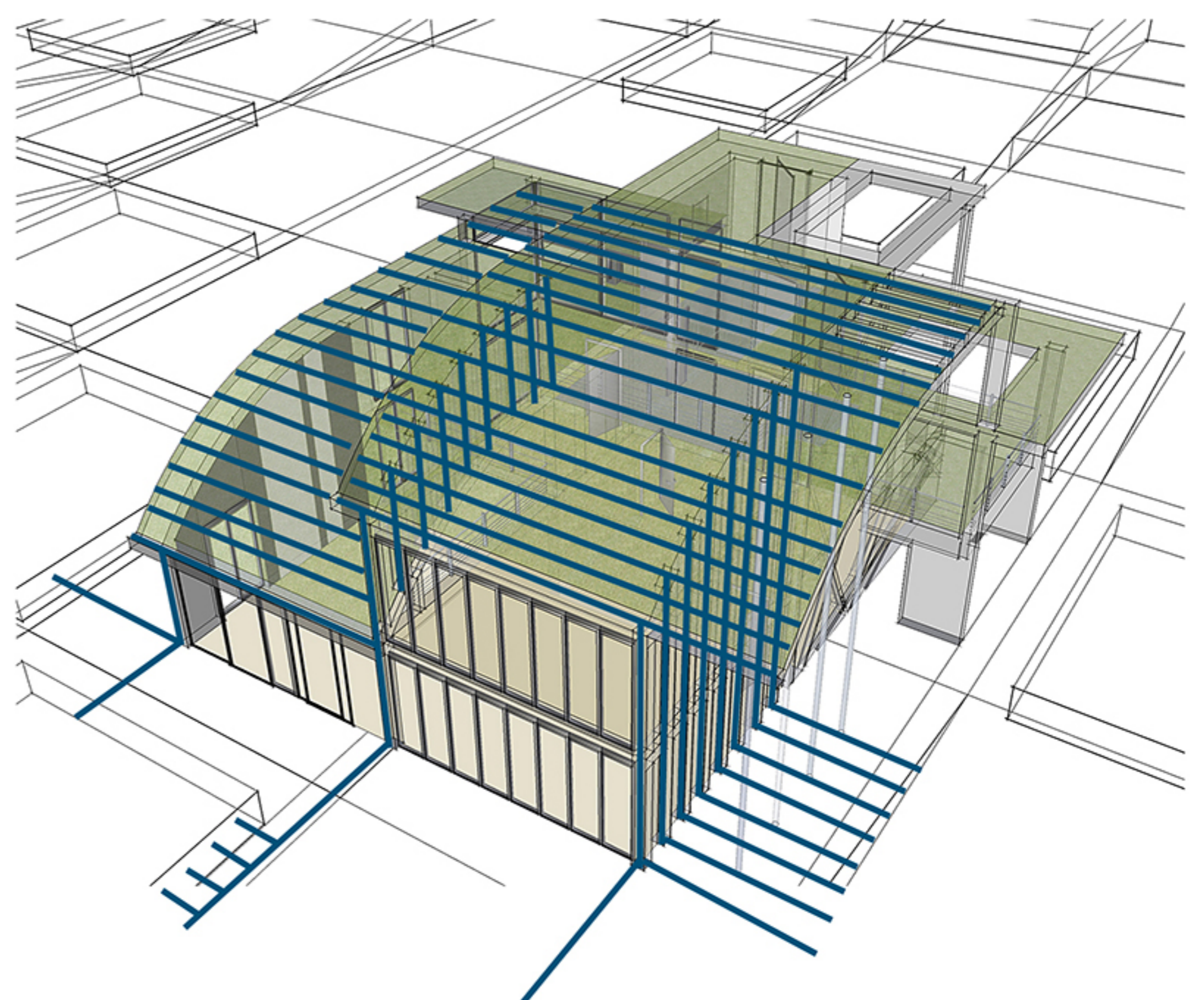


House's structure



The house's structure consists of many pillars, and the pillar connects every space and floor in the vertical plane. The pillar integrates every floor and space together, the interiors look like a continuous space. It also integrates the house and the ground together. Part of the wall was covered by the vegetation, making the house become one element of the ground.

House water collecting system



The house water collecting system is one part of the whole water collecting system. The structure of the roof is the same as the ground, and the water can be used to irrigate the crops on the wall and roof. The extra water can flood into the pond.