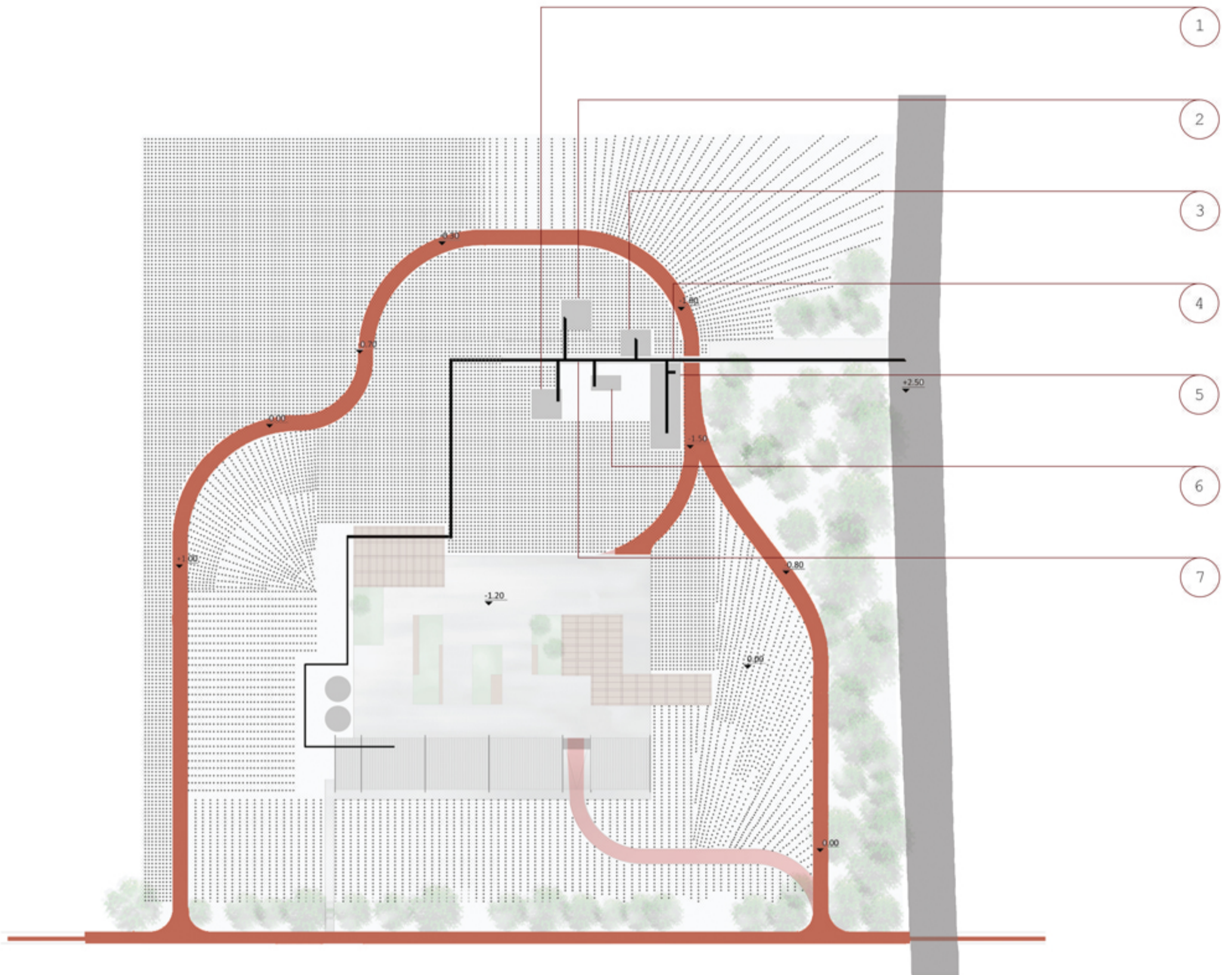


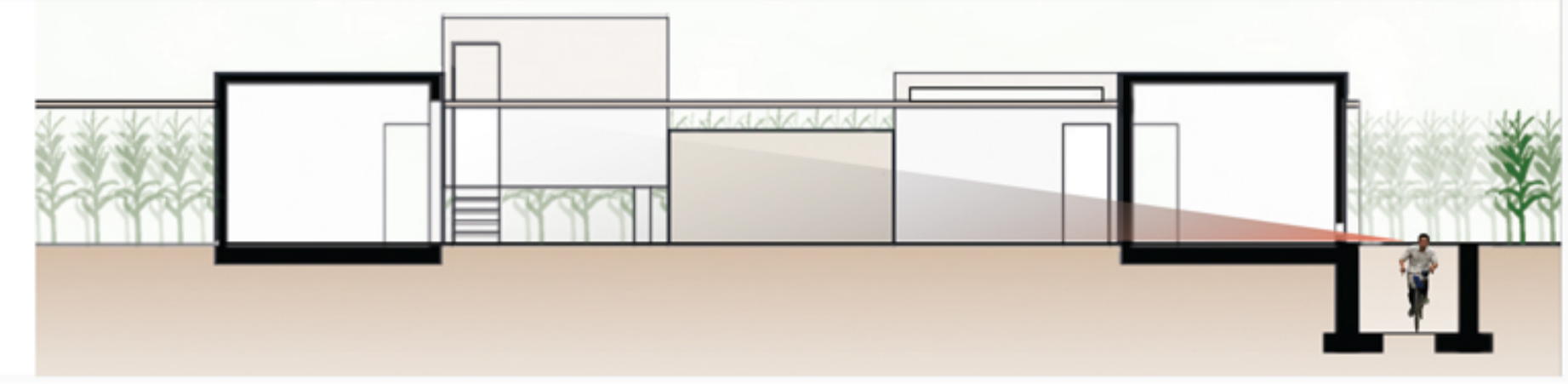
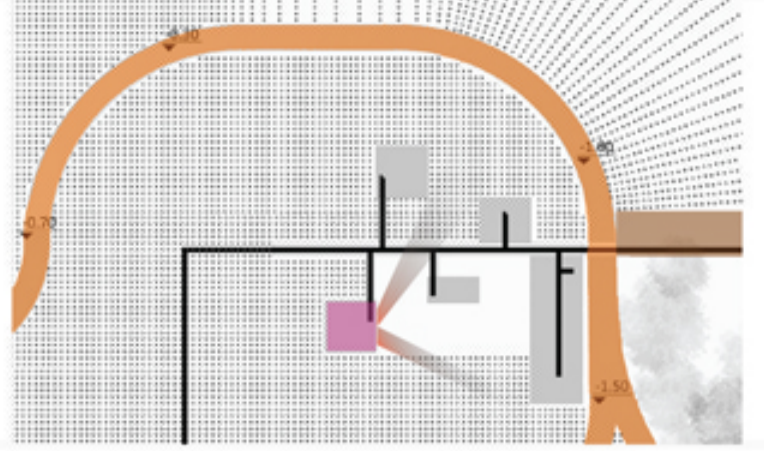
Privacy/Public



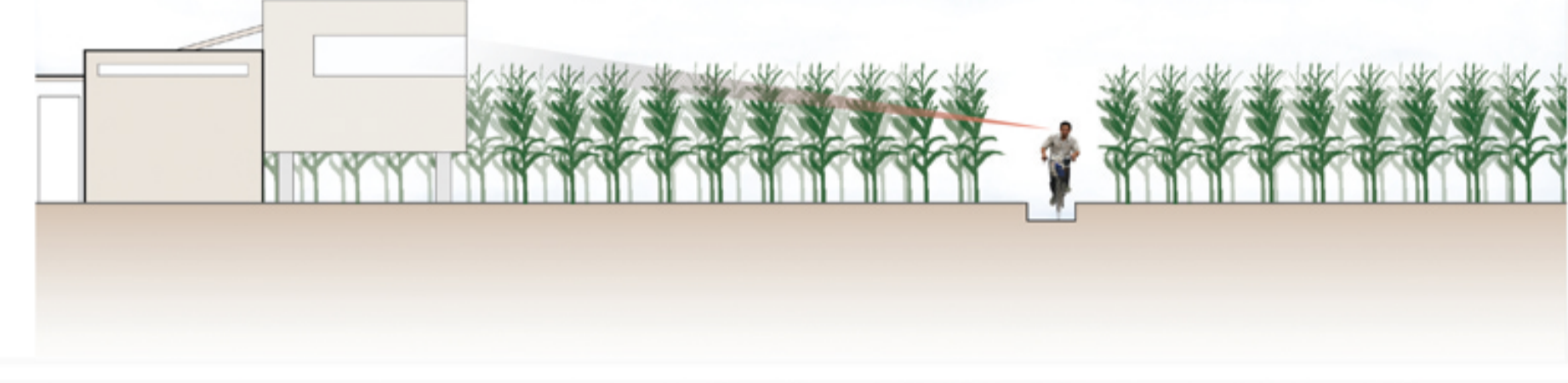
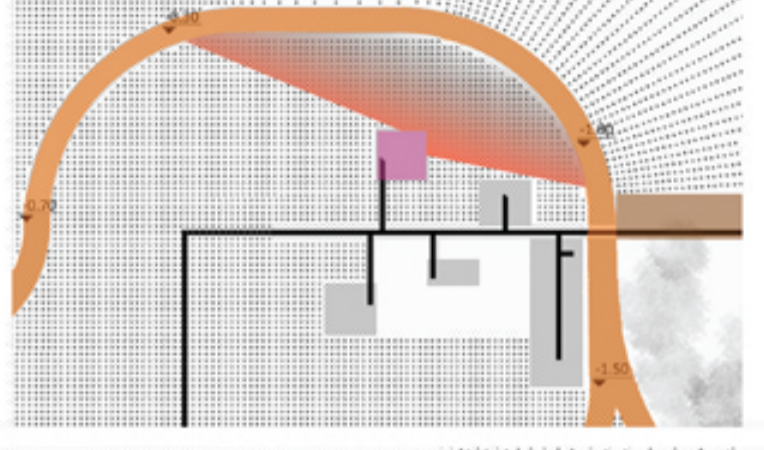
1:500

— Bicycle path
— Owner path

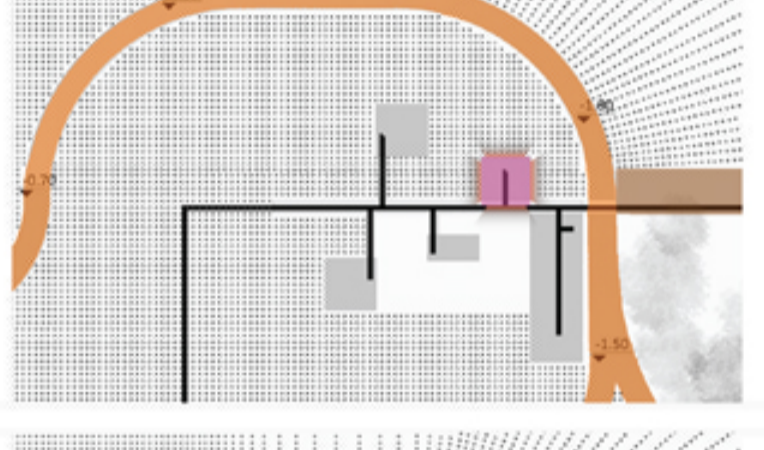
1. Bedroom
Privacy : 90%
The window gives the opportunity to go only in the private area. It is visible only when there is no maize.



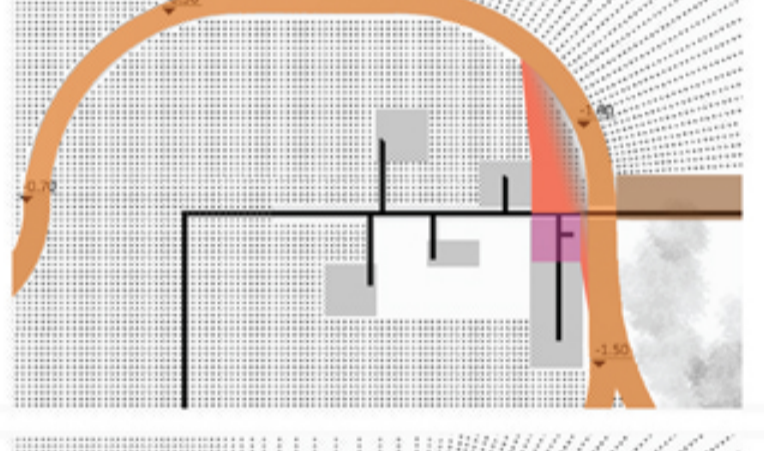
2. Studio
Privacy : 50%
The window and the position (+1 m) give the chance to the owner to see a very big part of the land from it. Its position makes hard to people for looking in.



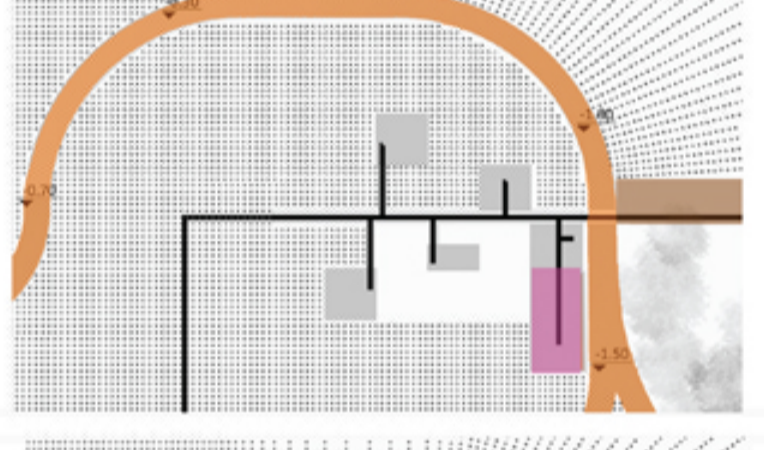
3. Kitchen
Privacy : 100%
The typology of the windows take off every chance of seeing inside from the path and from the street close to the entrance.



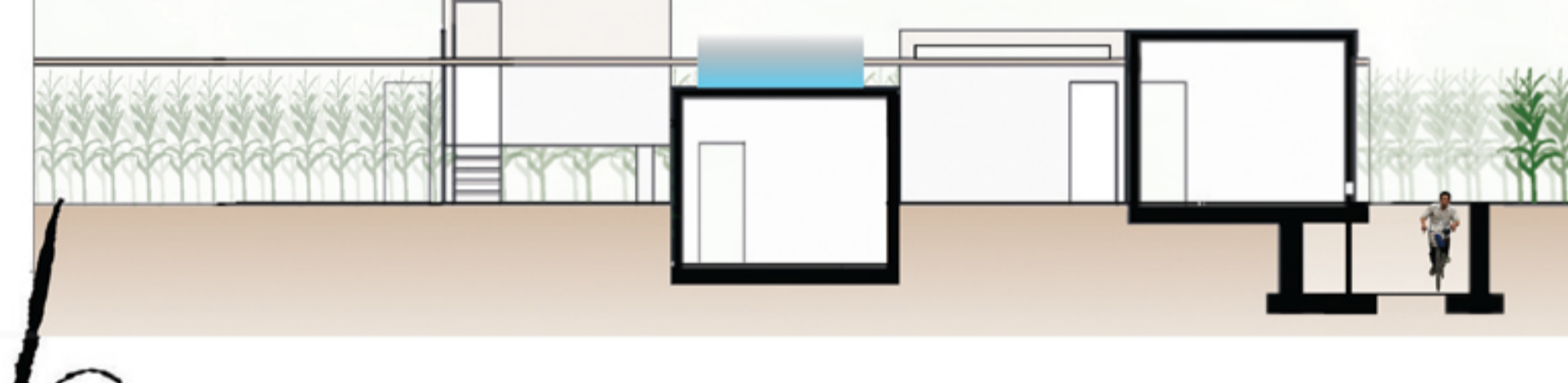
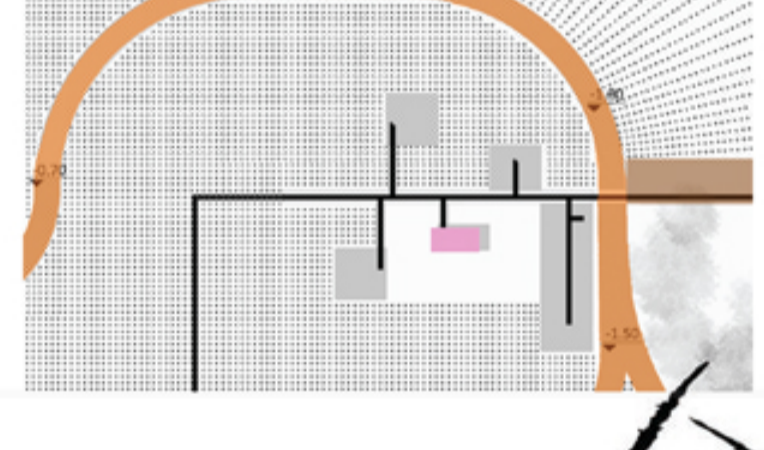
4. Patio
Privacy : 0%
It is the most public room of the house and in it is clearly visible the bicycle path.



5. Living room
Privacy : 90%
The small window which gives the front to the bicycle path it is only usefull for let in some light, the dimension does not allow to see from outside.



6. Bathroom
Privacy : 100%
It is the only one room partially underground (-1 m), for seeing inside the only way is to jump on the roof, this gives a completely privacy to the ambient.



Windows give personality to the rooms

