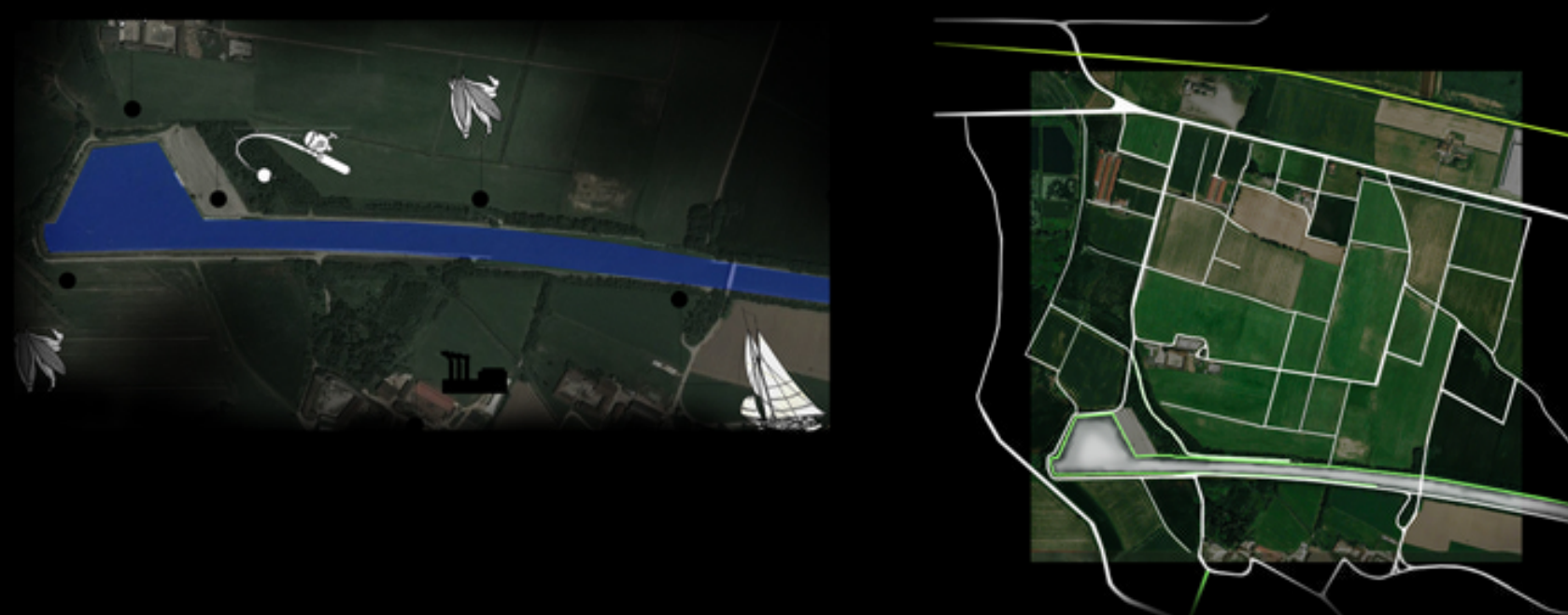


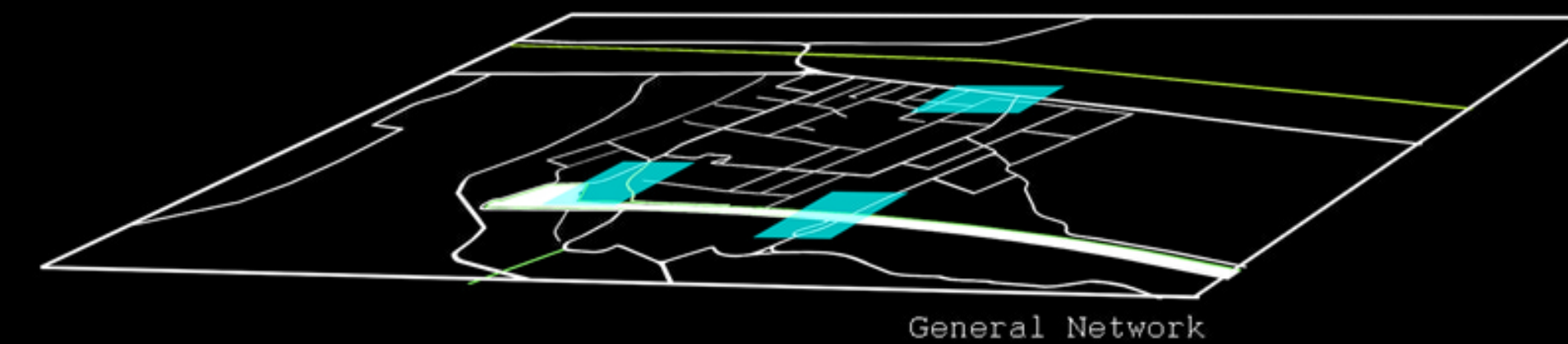
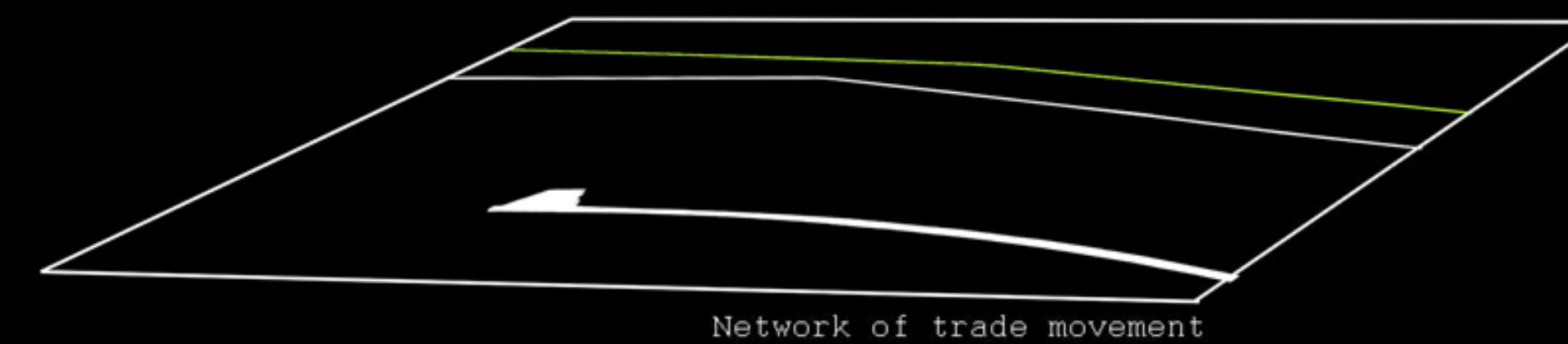
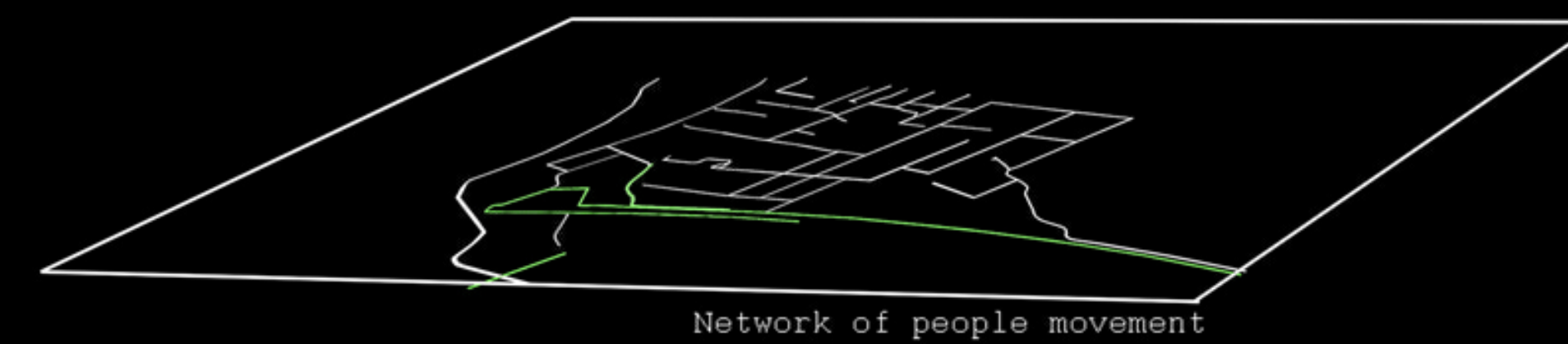
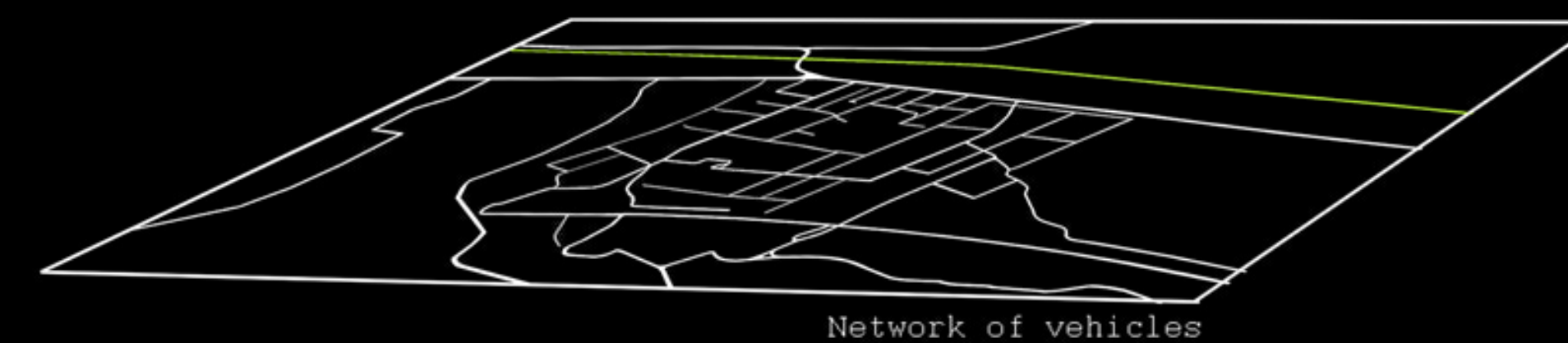
Activities around the river and channel



Network around the area

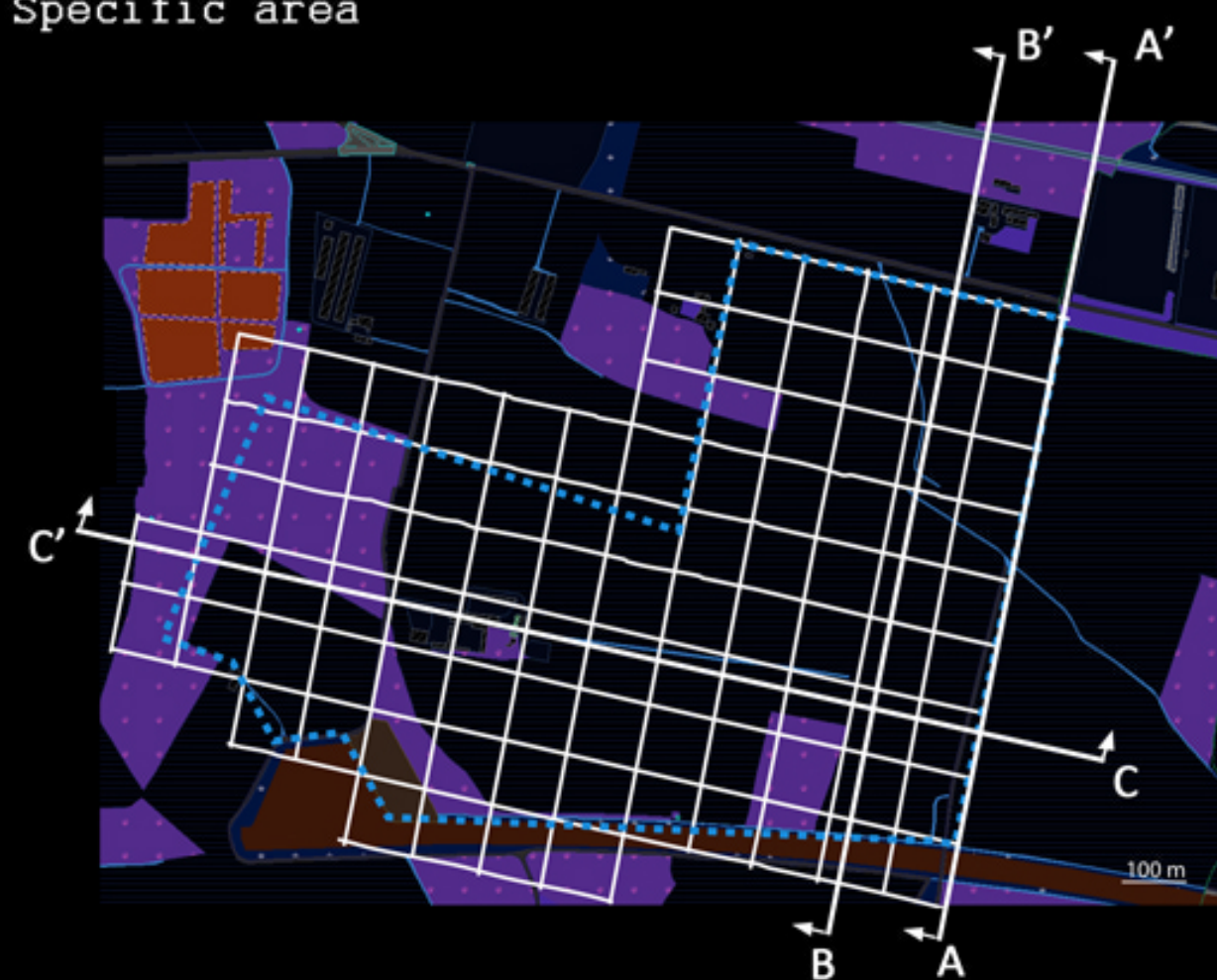


Layering of movements:

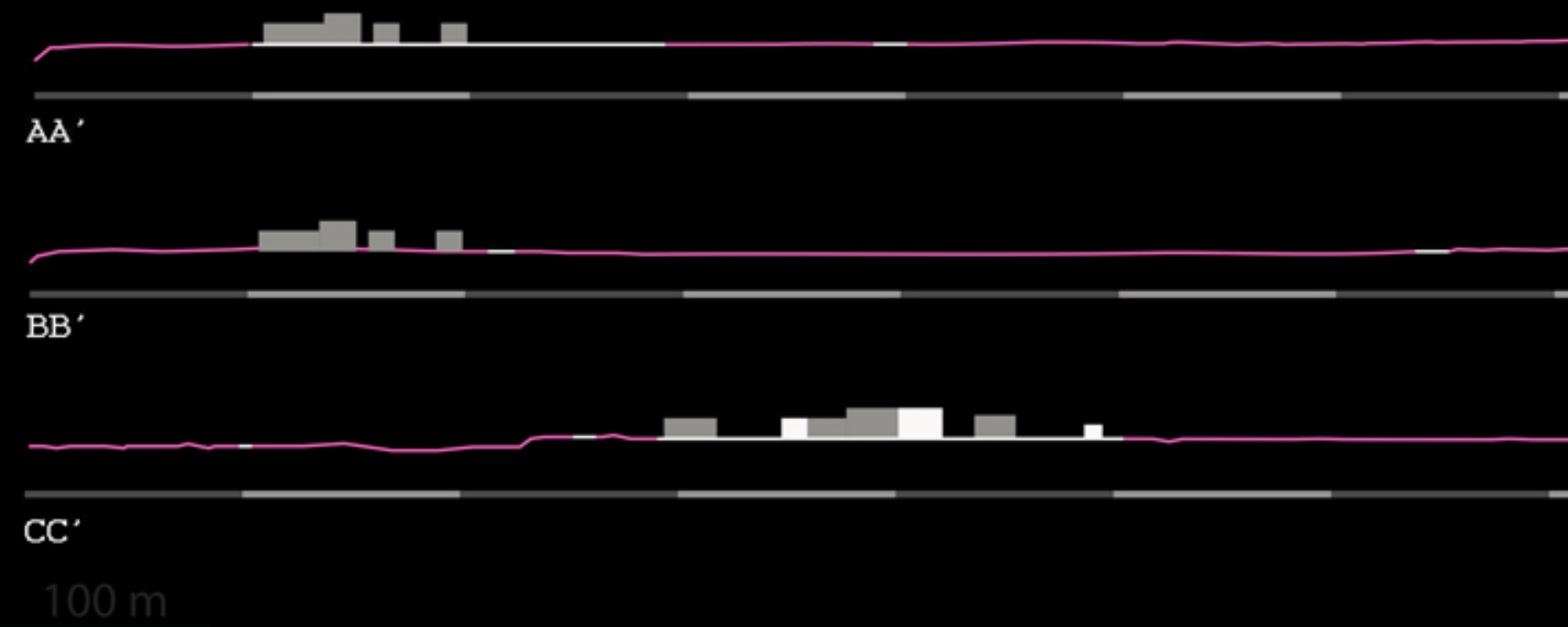


In north Italy, the main occupations of the inhabitants are the agriculture, the stock raising and the trade. The river that cross the area is not only the reason for the fertile land, but also for the fishing.
The specific area that we study is between the district of Cremona and Pizzighetone. Is rural area that borders in north with canal Cremona-Milano-Po and on south with some industrial units.

Specific area



Sections:



Ways of accesibility



Views from the area

